



# MONTHLY MEMBERSHIP PROGRESS REPORT

District 315B2

Results as of: 06/30/2019

GMT: SWADESH RANJAN SAHA

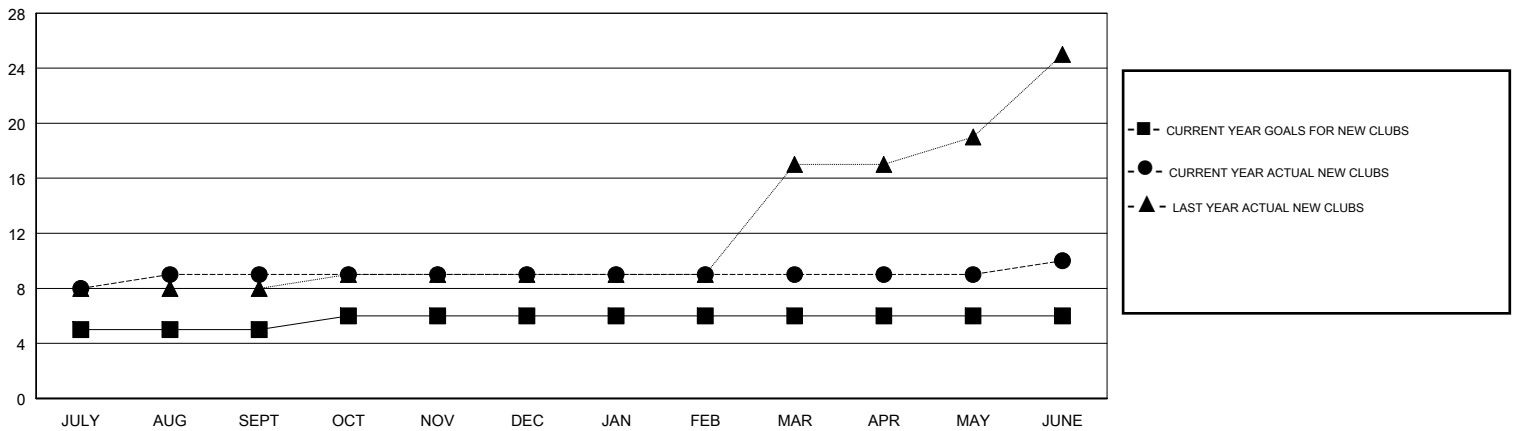
LOCATION REP OF BANGLADESH

GMT CA

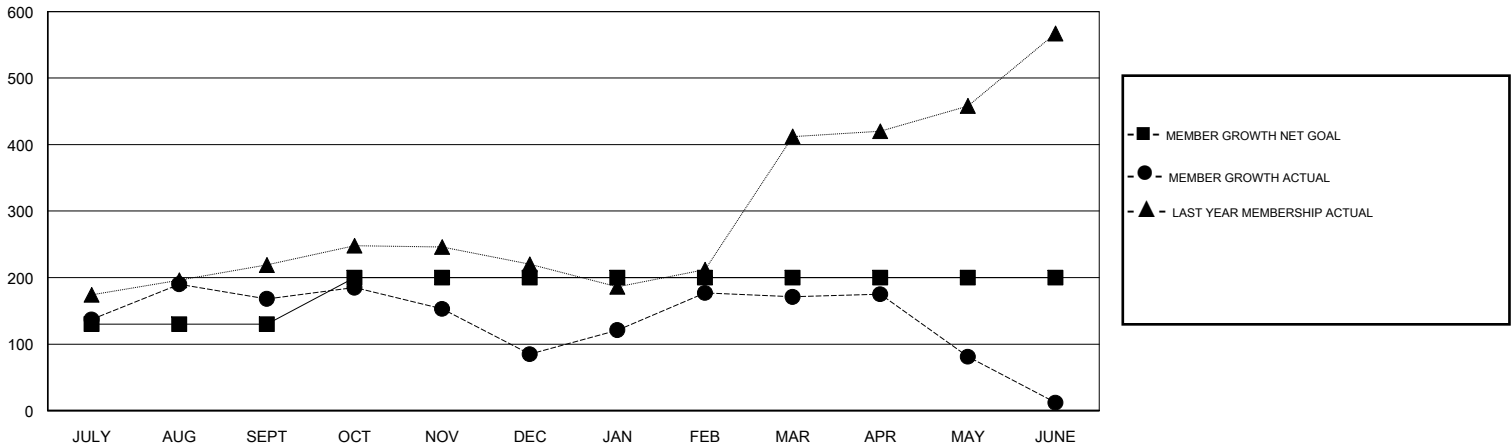
Clubs			
RESULTS FOR 2018-2019			
QUARTER	NEW CLUB GOAL	NEW CLUBS	DROPPED CLUBS
JULY/AUG/SEPT	5	9	2
OCT/NOV/DEC	1	0	3
JAN/FEB/MAR	0	0	1
APR/MAY/JUNE	0	1	2

Members			
RESULTS FOR 2018-2019			
QUARTER	MEMBER GROWTH NET GOAL	MEMBER GROWTH ACTUAL	DROPPED MEMBERS ACTUAL (including transfers)
JULY/AUG/SEPT	130	263	93
OCT/NOV/DEC	70	31	114
JAN/FEB/MAR	0	113	24
APR/MAY/JUNE	0	72	225

GOALS AND ACTUAL NEW CLUBS CUMULATIVE



GOALS AND ACTUAL MEMBERS CUMULATIVE



DROPPED CLUBS: 8	64 CLUBS OF 99 ADDED 1 OR MORE NEW MEMBERS	<u>GENDER DISTRIBUTION</u>	
DROPPED MEMBERS		MALE	1,810 (79.11%)
DECEASED	7	FEMALE	478 (20.89%)
CLUB CANCELLED	188	Women Percentage Fiscal Year Goal: 30%	
OTHER	261	TOTAL FAMILY UNIT MEMBERS	705
TOTAL	456	FAMILY MEMBERS PAYING HALF DUES	448

[CLICK HERE FOR CUMULATIVE MEMBERSHIP DATA](#)